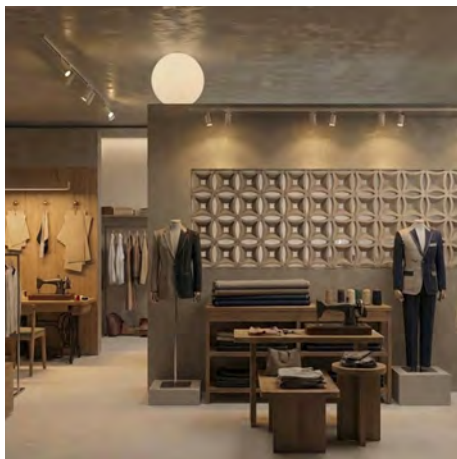
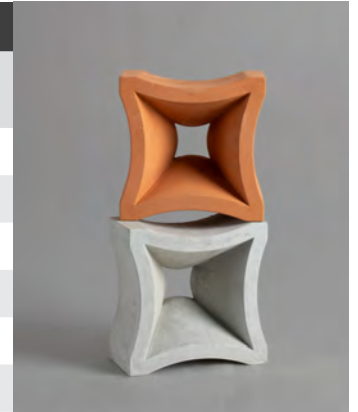


Specification	VBB 927
Dimension (mm)	200 x 200 x 100
Weight (kg/pc)	± 5.3
Coverage Area (pcs/m ²)	23.5
Packaging (pcs/plt)	200
Opening Percentage (%)	18.2
Privacy Level	high



PBM Veil Breeze Block (VBB) are premium architectural concrete blocks designed for refined façade and feature walls. Featuring smooth front face paired with a distinctive, top-cast watermark texture on the rear, VBB offers a more sculptural and polished appearance compared to conventional ventilation blocks. Perfect for both residential and commercial projects, VBB invites natural ventilation, filters daylight and spatial layering while maintaining a clean architectural expression.

PHYSICAL PROPERTIES	
Tolerances on Dimensions (mm)	+ 3 mm, - 5 mm (Category D1)
Type	Non-load-bearing concrete block
Material Composition	OPC Cement, Sand, Stone Chips
Material Density	± 2200 kg/m ³
Compressive Strength	> 7 N/mm ² (MS 1933-1:2017)
Water Absorption	< 2 g/m ² s (MS 1933-11:2017)
Joint Size	8-10 mm thick mortar joint
Finish	Smooth front face, top-cast watermark texture on the rear, with slight tonal variations due to raw materials



VEIL BREEZE BLOCK

KEY FEATURES	
Enhanced Airflow and Lighting	Provides natural ventilation and allows light to filter through, making it ideal for creating breathable spaces.
Aesthetic Appeal	Offers a decorative solution for walls, facades, and partitions with a unique geometric design that adds visual interest.
Privacy and Shade	Maintains privacy while permitting airflow, making it suitable for outdoor and semi-outdoor installations.
Versatile Applications	Can be used in a variety of settings, both indoors and outdoors, including residential and commercial spaces.
Durability	Made from high-quality concrete, ensuring long-lasting performance with minimal maintenance.

FURTHER INFORMATION

Cleaning & Maintenance

To ensure the longevity and appearance of PBM Ventblocks, periodic maintenance is recommended, especially for outdoor installations. If installed outdoors, it is advisable to apply two layers of breathable, silane-based water repellent or sealer to prevent the growth of fungus or algae. Depending on the product manufacturer's guidelines, reapplication of the sealer may be necessary every few years. Should fungus or algae growth occur, a high-pressure water jet can be used to remove it effectively, restoring the block's appearance.

Efflorescence

Efflorescence is a natural occurrence in concrete products. It appears as a white powdery deposit on the surface and does not affect the structural integrity. This is not a product fault and will gradually disappear with exposure to natural weathering and natural exposure.

Weathering

It is important to note that natural weathering and site conditions may cause slight shade variations on the surface of individual units. These variations are a normal part of the aging process and do not impact the structural integrity or performance of the block. Over time, as the product matures and blends with its environment, these differences will gradually even out.

Product Evolution

PBM is committed to the ongoing improvement of our ventilation block range. As product designs and specifications are regularly updated, we advise customers to verify the latest details with their supplier. PBM reserves the right to amend the technical information as needed, in line with industry standards and advancement without prior notice.

Contact Us

For more information or to place an order, please contact us on 03-32648080/32648686

Specifications are subject to change without prior notice. Refer to our official website for the latest updates.